

Chorley
Council

Planning
Committee Meeting

24 April 2022



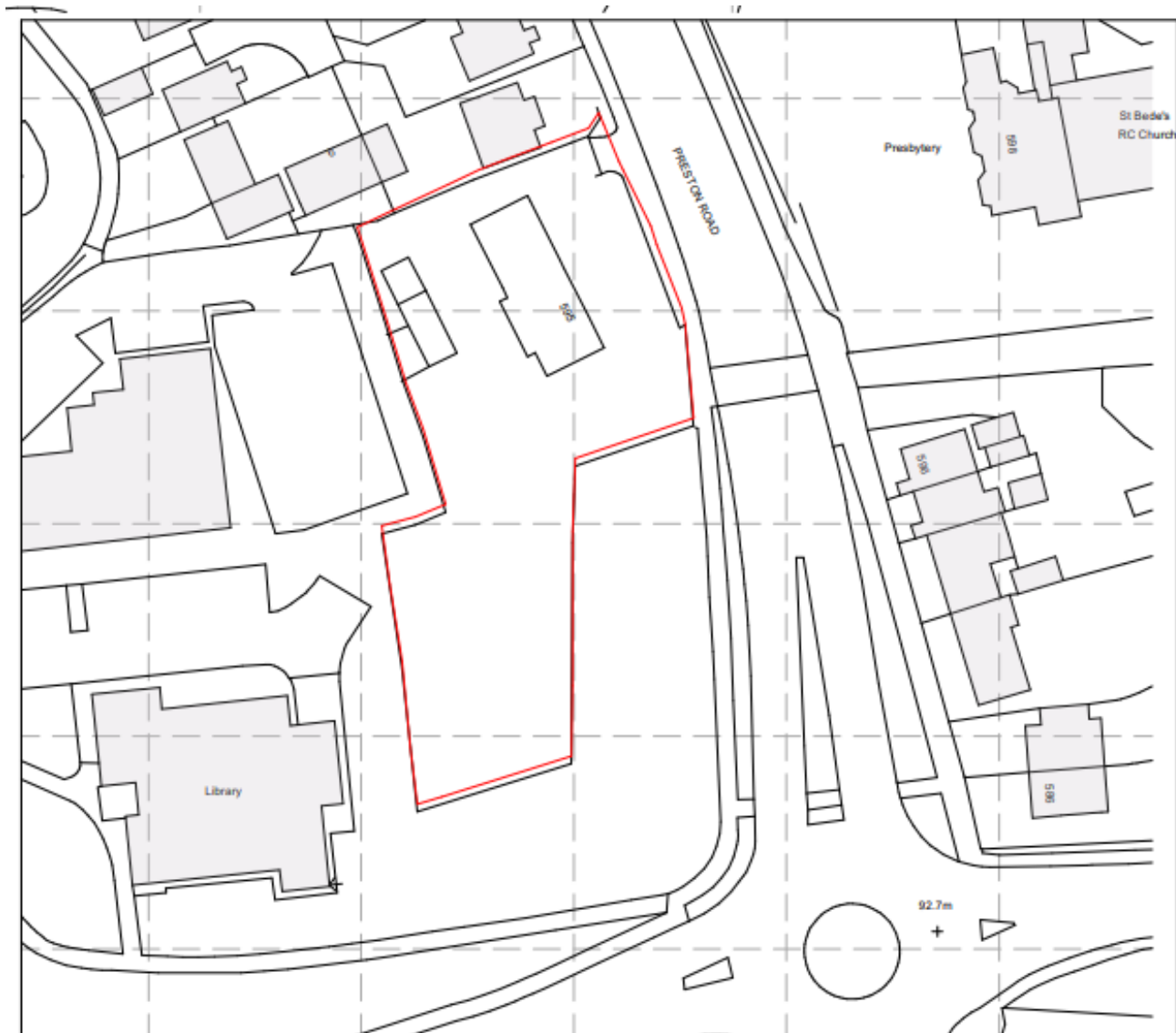
Item 3f

22/00081/FUL

Higher Morris Farm, 595 Preston Road, Clayton-Le-Woods, Chorley

Erection of two storey building containing seven self contained supported living units, staff living unit and communal areas, and one individual detached bungalow, along with associated driveway and parking following demolition of existing buildings

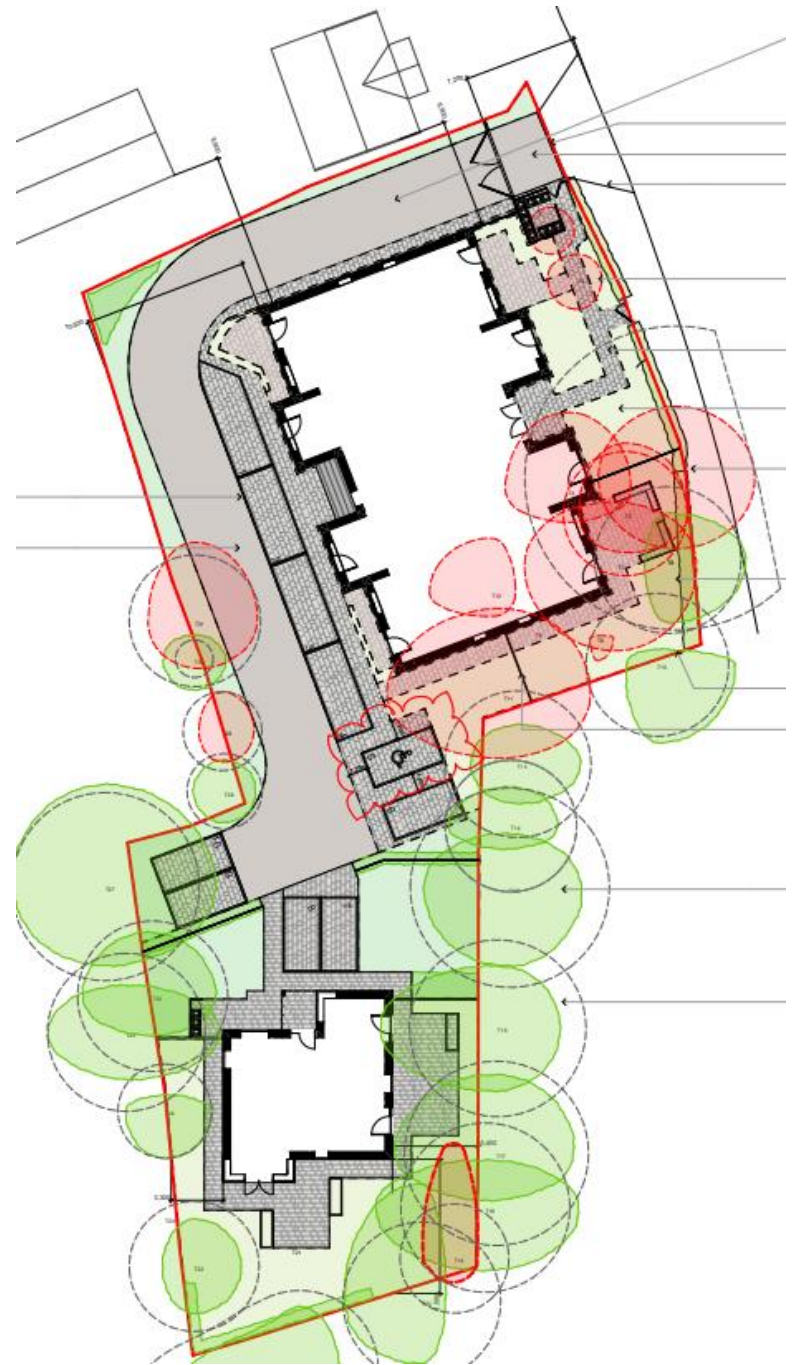
Location plan



Aerial image



Site layout plan



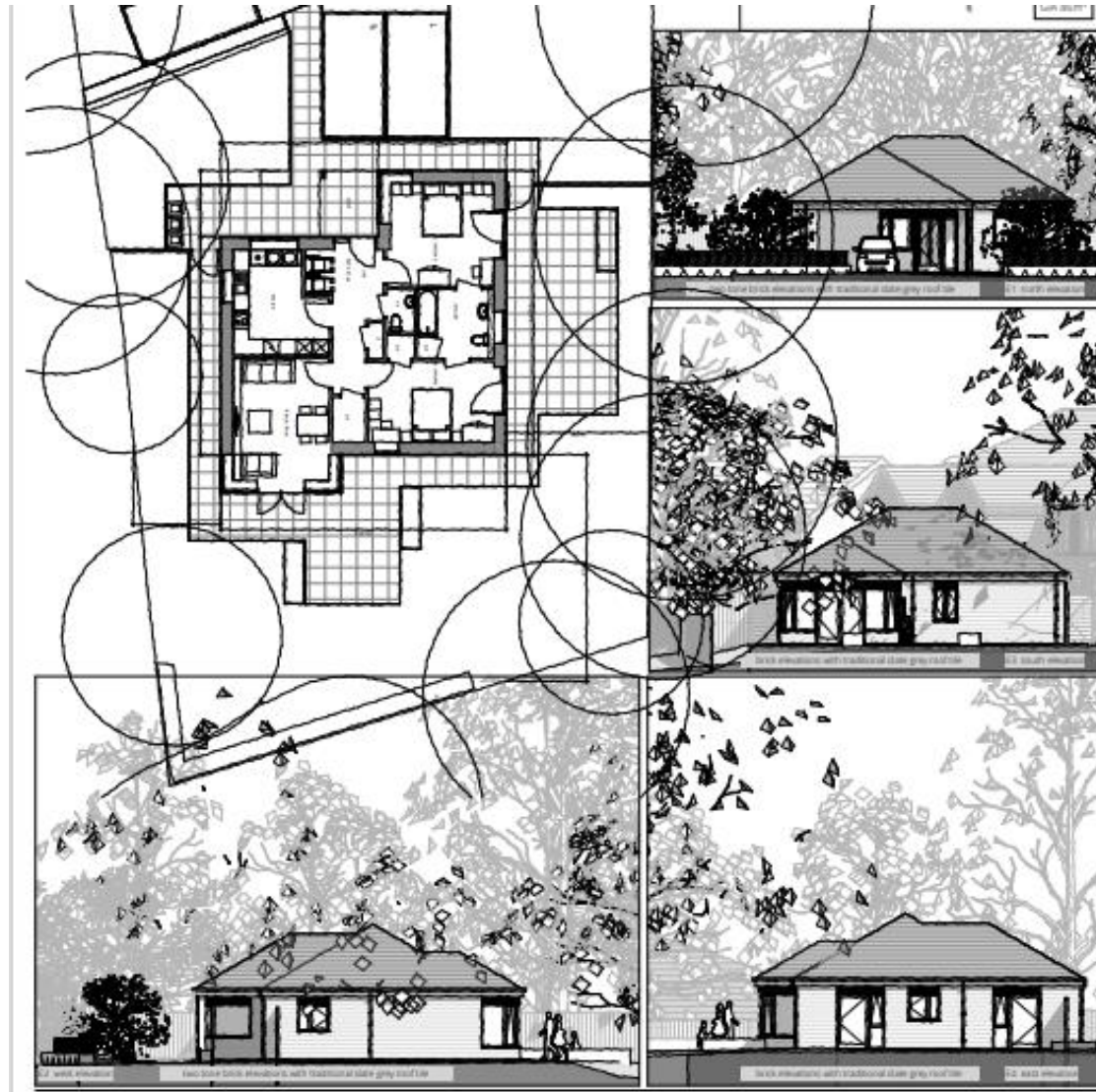
Street scene and visuals



Apartment building



Bungalow building



Site frontage



Site frontage



Site entrance



Site photo



Site photo



Site photo

